



PA SPEAKER SVR-100 5/15 W

PRODUCT CODE 51706, 50909

FEATURES

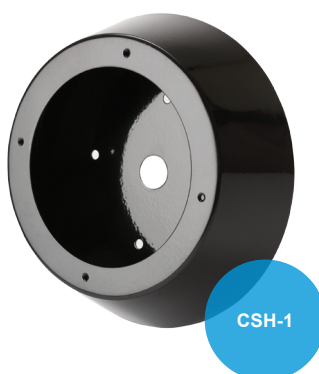
- 100 V line vandal resistant speaker
- Marine grade 316 stainless steel face plate
- Quality audio output

OPTIONAL ACCOMPANYING PRODUCTS

- Universal Audio Interface (UAI-3B1)

SPECIFICATIONS

Speaker	1 x 8 Ω, 8 W RMS, 4" dual cone
Frequency Response	100 Hz – 15 kHz (±6 dB)
Sensitivity	90 db SPL, 1 kHz, 1 W, 1 m
100 V Line Power Taps	(0.33, 0.66, 1.25, 2.5, 5) W (SVR-100 5 W) (1.25, 2.5, 5, 10, 15) W (SVR-100 15 W)
Operating Temperature	(-20 - 55) °C
Operating Humidity	(10 - 95) % relative humidity (non-condensing)
Cabling	Figure 8, 0.75 mm ² multi-strand (typical)
Connectors	4 way screw terminal block (SVR-100 5 W) 2 way screw terminal block (SVR-100 15 W)
Compliance	AS1670.4 EWIS standard (SVR-100/5W)
Form Factor	Circular flush wall panel or surface mount with CSH-1
Dimensions (Ø x D)	170 mm x 64-109 mm (SVR-100 5 W) 170 mm x 125 mm (SVR-100 15 W)
Weight	1.2 kg (SVR-100 5 W) 1.3 kg (SVR-100 15 W)
Material	316 stainless steel
Finishes	Linish, chamfered edge
Environment	Non rain exposed area
Vandal Resistant	Yes
Mounting Options	Flush mount direct into ceiling or wall, surface mount backbox (CSH-1)



SURFACE MOUNT BACK BOX CSH-1

PRODUCT CODE 50620

SPECIFICATIONS

Suitable For	SVR-100 series
Dimensions (Ø x D)	231 mm x 71 mm
Weight	1.2 kg
Material	304 stainless steel
Finishes	Powder coated, gloss, black
Environment	Non rain exposed area
Vandal Resistant	Yes
Speaker Mounting Holes	4 x M4 threaded holes
Speaker Fixings	4 x M4 security torx screws
Cable Entry	1 x 25 mm hole centred rear